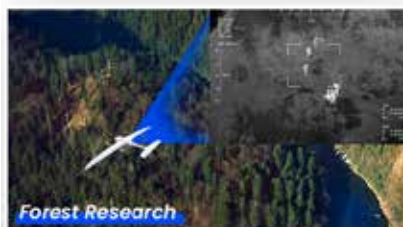
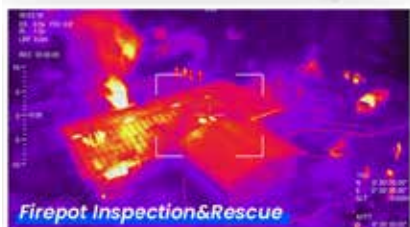
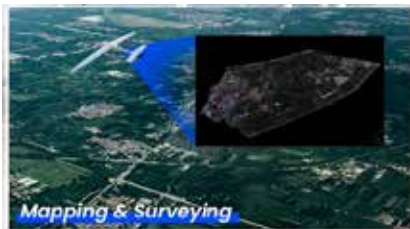




INSEE 350

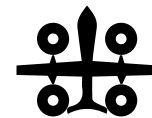
E-VTOL Fixed-Wing

Applications



2.5 HOURS flight time

INSEE 350 is a high-efficiency li-ion battery powered VTOL with long endurance 2.5hrs with 5kg payload which can be widely used in inspection, forest rescue, border patrol etc inspection.



Wingspan: 3500mm



Flight time: 150min



Flight radius: 150KM



Maximum load: 5KG



Maximum speed: 108KM/H



Celling height: 5800M



Muti Sensors Payload Integration



Oblique Camera
Riebo Master Pro



Medium Format Camera
Riebo M10



Full Frame Camera
Sony A7RIV



Multispectral Camera
Altum-PT



Multispectral Camera
RedEdge-P



Laser Scanner (LiDAR)
YellowScan Mapper+ OEM



Laser Scanner (LiDAR)
YellowScan
Surveyor Ultra OEM



Laser Scanner (LiDAR)
YellowScan Explorer



Laser Scanner (LiDAR)
YellowScan Explorer

Model No	INSEE 350
Type	eVTOL fixed wing
Color	White color as default (support customization)
Wingspan	3500mm
Length	1880mm
Belly to Ground	195mm
Battery compartment size	30*20*15cm
Material	Carbon fiber + fiberglass
Airframe Weight	8kg
MTOW	33kg(included batteries)
Max Payload	5kg
Suggested load	1-5kg
Flight time	2.5hrs (5kg payload)
Max Cruising Speed	108km/h (30m/s)
Min Cruising Speed	72km/h (20m/s)
Max Flight Altitude	5800m
Max Wind resistance	16m/s (fixed wing), 7.9m/s (VTOL)
Battery (Recommended)	4 * 6S 27000mAH HED Li-ion
Working Temperature	-20°C~45°C
IP Grade	IP44
Frequency	2400-2500 MHz
Transmission Power (EIRP)	20dBm.



Scan เพื่อเยี่ยมชม
เว็บไซต์ของเรา
<https://www.inseeuav.com>

